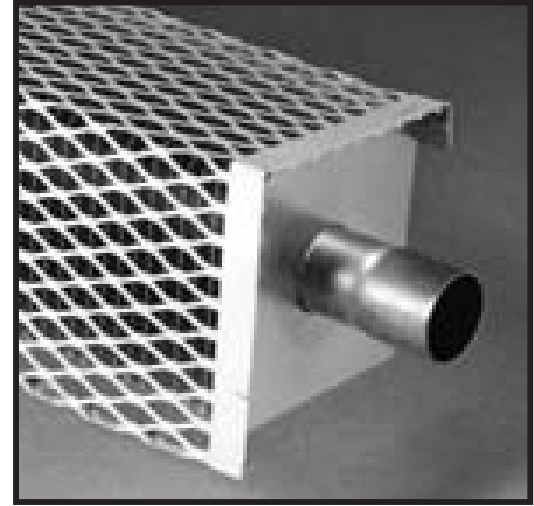
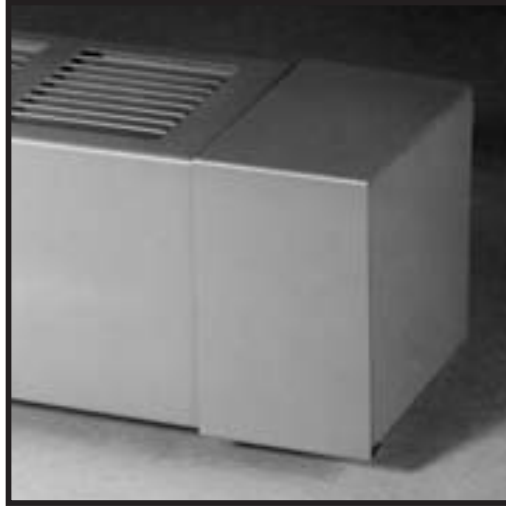
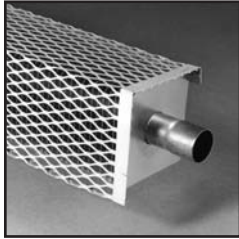
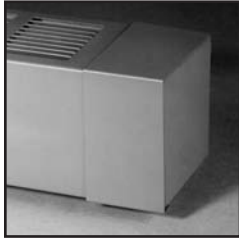
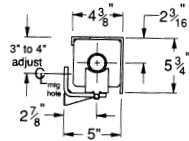


# F & EM SERIES

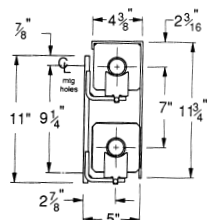
## LOUVERED AND EXPANDED METAL ELEMENT COVERS



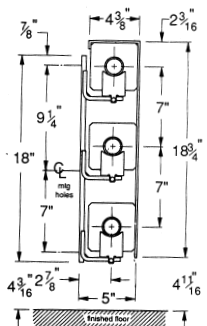
Custom Heights & Configurations Available



**F-5  
EM-5**



**F-12  
EM-12**



**F-19  
EM-19**

Element positions shown maximize output of enclosure. Single or double rows of elements may be placed in any of the two or three positions. Element position is adjustable vertically by 1/8" and horizontally by 1/16".

F SERIES

EM SERIES

### ORDERING DATA

**CONSTRUCTION:** Single piece cover attaches directly to element.

**DEPTH:** 4 3/8"

**HEIGHTS:** 4 3/4" (one tier), 11 3/4" (two tier), 18 3/4" (three tier)

**LENGTHS:** 2', 3', 3 1/2', 4', 5', 6', 7', 8'. Other 1/2' lengths available to order.

**MATERIAL:** **F:** 18-ga cover. **EM:** 16-ga cover.

**FINISH:** Galvanized standard. Available in baked enamel.

**WALL BRACKETS/HANGERS:** Order separately, specify BKT (bracket only) or BKT ASSY (bracket complete with SC hangers) followed by cover stock number and quantity.

**ELEMENTS:** Copper with aluminum fins: C-340, C-440, C-540. Steel with electro-galvanized steel fins: S-532, S-540, S-832. Lengths from 2 to 12 feet. See p. 26.

**JOINTS:** Telescopic accessories eliminate the need to perfectly butt one length of cover to the next. Critical linear and vertical tolerances are eliminated because telescopic assembly absorbs misalignment that might result from uneven floors and walls.

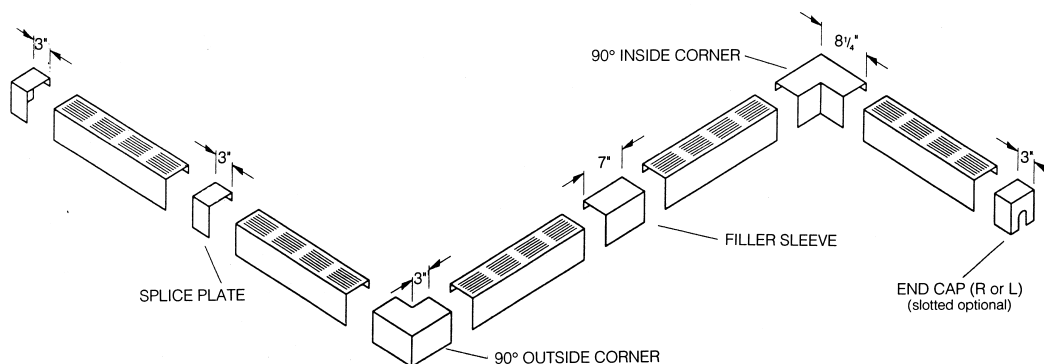
	Recommended number of brackets and hangers for given length.		
Element	2	3	4
S-532	2-4 ft.	5-7 ft.	8 ft.
S-540	2-4 ft.	5-7 ft.	8 ft.
S-832	2-4 ft.	5-6 ft.	7-8 ft.
C-340	2-5 ft.	6-8 ft.	—
C-440	2-5 ft.	6-8 ft.	—
C-540	2-5 ft.	6-8 ft.	—

\* Based on 65°F entering air temperature. For ratings at lower water temperature, refer to conversion table on page 33.

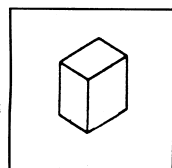
# RATINGS

Model Number	Enclosure Height	Element Type	Tube Size and Material	Fin Size and Material	Fins Per Foot	Steam 1 PSI * Btu/Hr. Per Foot	HOT WATER RATINGS* BTU/HR./FT. (Flow Rate 3 Ft./Sec.)							
							150° F	160° F	170° F	180° F	190° F	200° F	210° F	220° F
F-5	4¾"	S-532	1¼" steel	4¼" steel	32	1250	563	663	763	862	975	1075	1188	1313
		S-540	1¼" steel	4¼" steel	40	1340	603	710	817	925	1045	1152	1273	1407
		S-832	2" steel	4¼" steel	32	1280	576	678	781	883	998	1101	1216	1344
		C-340	¾" copper	4¼" alum.	40	1560	702	827	951	1077	1217	1341	1482	1638
		C-440	1" copper	4¼" alum.	40	1650	743	875	1007	1139	1287	1419	1568	1733
		C-540	1¼" copper	4¼" alum.	40	1620	729	859	988	1118	1264	1393	1539	1701
F-12 Two-tier element	11¾"	S-532	1¼" steel	4¼" steel	32	2070	932	1097	1263	1428	1615	1780	1967	2174
		S-540	1¼" steel	4¼" steel	40	2160	972	1145	1318	1490	1685	1858	2052	2268
		S-832	2" steel	4¼" steel	32	2090	941	1108	1275	1442	1630	1797	1986	2195
		C-340	¾" copper	4¼" alum.	40	2600	1170	1378	1586	1794	2028	2236	2470	2730
		C-440	1" copper	4¼" alum.	40	2750	1238	1458	1678	1897	2145	2365	2613	2888
		C-540	1¼" copper	4¼" alum.	40	2700	1215	1431	1647	1863	2106	2322	2565	2835
F-19 Three-tier element	18¾"	S-532	1¼" steel	4¼" steel	32	2580	1161	1367	1574	1780	2012	2219	2451	2709
		S-540	1¼" steel	4¼" steel	40	2690	1211	1426	1641	1856	2098	2313	2556	2825
		S-832	2" steel	4¼" steel	32	2610	1175	1383	1592	1801	2036	2245	2480	2741
		C-340	¾" copper	4¼" alum.	40	3139	1413	1664	1915	2166	2449	2700	2982	3296
		C-440	1" copper	4¼" alum.	40	3330	1499	1765	2031	2298	2597	2864	3164	3497
		C-540	1¼" copper	4¼" alum.	40	3260	1467	1728	1989	2249	2543	2804	3097	3423
EM-5	4¾"	S-532	1¼" steel	4¼" steel	32	1290	581	684	787	890	1006	1109	1226	1355
		S-540	1¼" steel	4¼" steel	40	1370	617	726	836	945	1069	1178	1302	1439
		S-832	2" steel	4¼" steel	32	1310	590	694	799	904	1022	1127	1245	1376
		C-340	¾" copper	4¼" alum.	40	1656	745	878	1010	1143	1292	1424	1574	1739
		C-440	1" copper	4¼" alum.	40	1750	788	928	1068	1208	1365	1505	1663	1838
		C-540	1¼" copper	4¼" alum.	40	1720	774	912	1049	1187	1342	1479	1634	1806
EM-12 Two-tier element	11¾"	S-532	1¼" steel	4¼" steel	32	2270	1022	1203	1385	1566	1771	1952	2157	2384
		S-540	1¼" steel	4¼" steel	40	2390	1076	1267	1458	1649	1864	2055	2271	2510
		S-832	2" steel	4¼" steel	32	2290	1031	1214	1397	1580	1786	1969	2176	2405
		C-340	¾" copper	4¼" alum.	40	2918	1314	1547	1780	2014	2276	2510	2772	3064
		C-440	1" copper	4¼" alum.	40	3090	1391	1638	1885	2132	2410	2657	2936	3245
		C-540	1¼" copper	4¼" alum.	40	3030	1364	1606	1848	2091	2363	2606	2879	3182
EM-19 Three-tier element	18¾"	S-532	1¼" steel	4¼" steel	32	3060	1377	1622	1867	2111	2387	2632	2907	3213
		S-540	1¼" steel	4¼" steel	40	3140	1413	1664	1915	2167	2449	2700	2983	3297
		S-832	2" steel	4¼" steel	32	3080	1386	1632	1879	2125	2402	2649	2926	3234
		C-340	¾" copper	4¼" alum.	40	3736	1681	1980	2279	2578	2914	3214	3550	3923
		C-440	1" copper	4¼" alum.	40	3960	1782	2099	2416	2732	3089	3406	3762	4158
		C-540	1¼" copper	4¼" alum.	40	3880	1746	2056	2367	2677	3026	3337	3686	4074

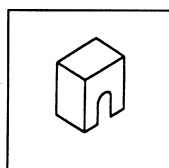
# ACCESSORIES



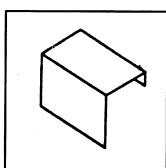
# TELESCOPIC ACCESSORIES



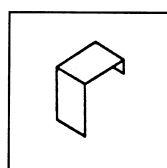
End Cap



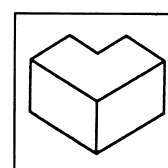
Slotted End Cap



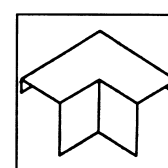
Filler Sleeve



Splice Plate



Outside Corner



Inside Corner