

Slant/Fin

INTREPID TRDV

Direct vent, cast-iron oil boiler with Tankless coil



The direct vent, Intrepid TRDV oil-fired cast iron boiler offers high-efficiency heating without a chimney. TRDV series boiler feature superb combustion with AFUE of 87%. Available in hot water models with or without a tankless heater. The computer-aided design heat exchanger is wider and lower for more even heat transfer. The push nipple ports do not obstruct the flue passage. More BTU's per section than ordinary boilers. Features include metal push nipples, stainless steel tankless heater cap nuts, return tee for additional zones and brand name controls.

- No chimney required
- More boiler location options using up to 15' of flexible vent pipe
- Concentric vent termination kit
- AFUE 87%
- Swing out burner door
- Speedy service flue collector uses a resealable gasket
- Easy access, higher output tankless heater coil
- Refractory target wall increases combustion efficiency
- Front and rear tapings

Since 1949
Slant/Fin
BOILERS & BASEBOARD

We Build Trust and Comfort

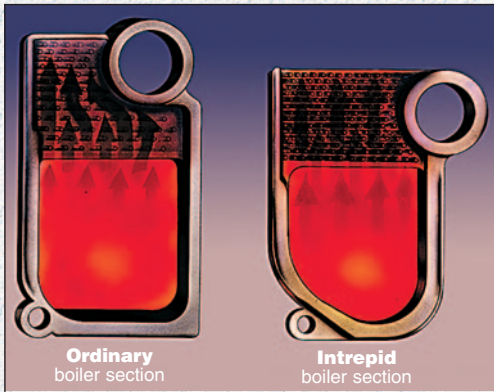
www.slantfin.com



Look for our
Hydronic Explorer app
on iTunes!
(Works with iPad or iPhone)

INTREPID TRDV

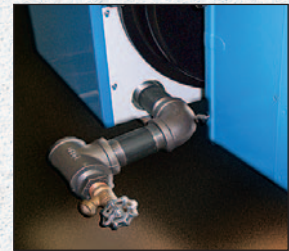
Advanced design boiler sections minimize soot buildup.



In most boilers, the hot flue gases which rise from the combustion area must pass around the push nipples that join the heating sections. This results in uneven heat transfer, concentrations of soot buildup and undesirable draft loss

New high performance direct vent Intrepid TRDV oil boilers from Slant/Fin require no chimney. They are an ideal choice for new construction, or as an alternative to making costly repairs to poor chimneys. For reliable performance, the TRDV boiler is designed with silicone sealant or silicone coated rope at all flue passage joints. Install with TRDV concentric vent termination kit and flexible exhaust tubing. Tankless coil optional. Input rate of .85 gph.

- Swing open burner door
- Rugged heavy-duty jacket
- Front mounted service switch
- Concentric vent terminal requires just one wall opening
- Vent exhaust tubing kits: 10 and 15 ft. lengths
- Uses galvanized or flexible air intake pipe (not included)
- Resealable flue collector gasket
- Burners available: Riello BF 5
- Vacuum relief included
- Lifetime Limited Warranty



A return piping kit, packaged with every TRDV boiler, provides a utility tapping that is ideal for connecting an extra circulator. Includes a 3/4" reducing bushing and drain.

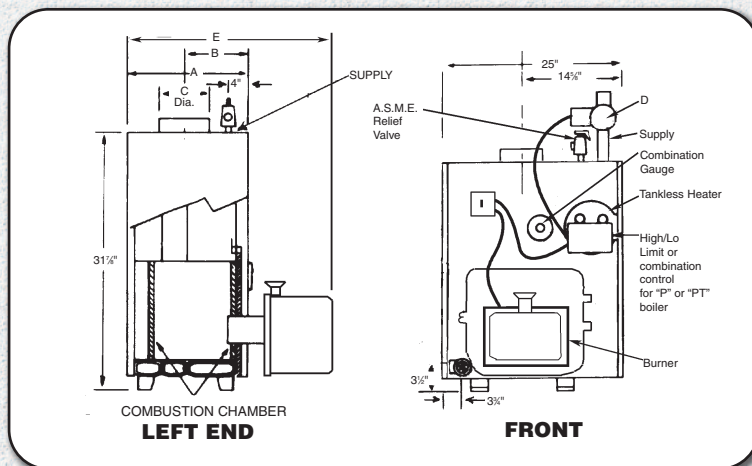


Tankless heater models utilize long-life stainless steel cap nuts on coil.

Ratings and Dimensions

| Model No. | AHRI Burner Capacity Oil Input † | | DOE Heating Capacity Water (MBH)* | AHRI Net Rating (MBH)* | AFUE % | Dimensions (inches) | | | | | |
|-------------|----------------------------------|-----|-----------------------------------|------------------------|--------|---------------------|-------------------|---------------|-----------------------|--------------------|--------------|
| | GPH | MBH | Water | Water | Water | Boiler Length "A" | Front to Flue "B" | Flue Dia. "C" | Circulator Flange "D" | Overall Length "E" | Boiler Sect. |
| TRDV-30-.85 | .85 | 119 | 104 | 90 | 87 | 14 7/8" | 10 1/16" | 6" | 1 1/4" | 27 5/8" | 3 |

TRDV-30-.85 is the only TRDV that is Energy Star qualified.



Standard working pressure 30 psi water. All boilers hydrostatically tested — A.S.M.E.

* For forced hot water heating systems where the boiler and all piping are located within the area to be heated, the boiler may be selected on the basis of gross D.O.E. capacity output. The net I=B=R output ratings shown are based on an allowance for piping and pickup of 1.15 (water). D.O.E. capacity gross output is divided by the allowance to obtain net rating. The manufacturer should be consulted before selecting a boiler for unusual piping and pickup requirements such as intermittent system operation, extensive piping, etc.

† Ratings apply to the use of light oil at 140 MBH per gallon.



©2015 Slant/Fin Corp. • Publication TRDV-10 • Printed in U.S.A. 1115

SLANT/FIN CORPORATION, Greenvale, N.Y. 11548 • Phone: (516) 484-2600
 FAX: (516) 484-0933 • In Canada: Slant/Fin LTD/LTEE, Mississauga, Ontario • 905-677-8400 • www.slantfin.com
www.slantfin.com