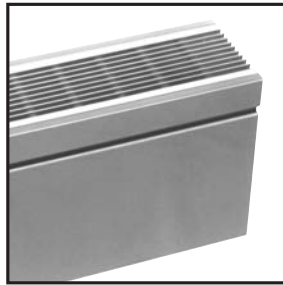


**Slant/Fin**

# MULTI/PAK<sup>®</sup> 95

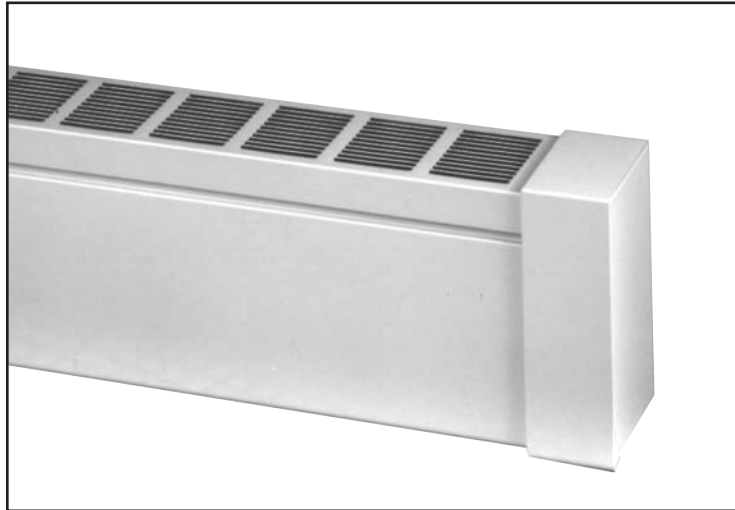
## FLAT-TOP, TWO-PIECE ENCLOSURE

*Pre-painted. Factory packaged.*



Aluminum grille optional.

### MODELS 95-10 AND 95-17



ELEMENT	X
C-340	3
C-440	3 <sup>1</sup> / <sub>8</sub>
C-540	3 <sup>1</sup> / <sub>4</sub>
S-532	3 <sup>3</sup> / <sub>8</sub>
S-540	3 <sup>3</sup> / <sub>8</sub>

## ORDERING DATA

### Multi/Pak 95 Complete Enclosure Assembly

**PACKAGING:** Complete two-piece assembly factory packaged with necessary brackets and hangers.

**CONSTRUCTION:** Two-piece interlocking top cover/front cover mount on wall brackets. Lock in place to provide the same shape with better rigidity than one-piece covers.

**DEPTH:** 5<sup>1</sup>/<sub>4</sub>"

**HEIGHTS:** 9<sup>3</sup>/<sub>4</sub>" (one tier), 16<sup>3</sup>/<sub>4</sub>" (one or two tier)

**LENGTHS:** 2', 3', 3<sup>1</sup>/<sub>2</sub>', 4', 5', 6', 7', 8'. Elements from 2 to 12 ft.

**MATERIAL:** 18-gauge galvanized steel top and front cover. 11-gauge wall brackets.

**FINISH:** Nu-White baked enamel is standard. Custom color available on special order. Anodized architectural aluminum grille optional.

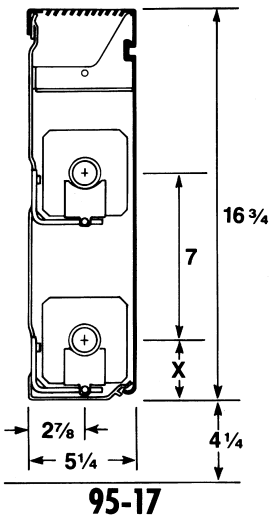
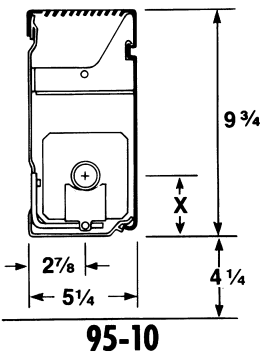
**WALL BRACKETS/HANGERS:** Packaged with complete assembly. SC-2 hanger has guide rod to provide 1<sup>5</sup>/<sub>16</sub>" lateral expansion movement, 1<sup>1</sup>/<sub>8</sub>" vertical pitch adjustment. Brackets and hangers provided with complete assembly as follows:

Length	95-10		95-17	
	Brackets	Hangers	Brackets	Hangers
2-5 ft.	2	2	2	4
6-8 ft.	3	3	3	6

**ELEMENTS:** Copper with aluminum fins: C-340, C-440, C-540. Steel with electro-galvanized steel fins: S-532, S-540. Lengths from 2 to 12 feet. See p. 30.

**JOINTS:** Telescopic cover accessories eliminate the need to perfectly butt one length of cover to the next. Critical linear and vertical tolerances are eliminated because telescopic assembly absorbs misalignment that might result from uneven floors and walls.

See pages 4-5 for description of features



### Multi/Pak 90 Series two-piece fin-tube enclosure. The modern choice in commercial radiation.

- Available as a "stock item".
- Factory packaging protects the cover until ready to install.
- Easy to install. Easy to service.
- Precut lengths, telescopic accessories, speed installations.
- Nu-White baked enamel finish.



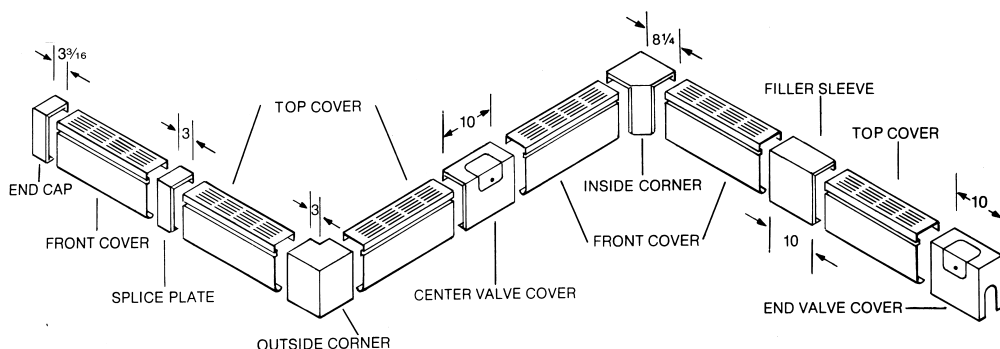
# RATINGS

with or without dampers

Cover Type	Enclosure Height	Element Type	Tube Size and Material	Fin Size and Material	Fins Per Foot	Steam 1 PSI * Btu/Hr. Per Foot	HOT WATER RATINGS* BTU/HR./FT. (Flow Rate 3 Ft./Sec.)							
							150° F	160° F	170° F	180° F	190° F	200° F	210° F	220° F
95-10	9 3/4"	S-532	1 1/4" steel	4 1/4" steel	32	1254	564	665	765	865	978	1078	1191	1317
		S-540	1 1/4" steel	4 1/4" steel	40	1470	662	779	897	1014	1147	1264	1397	1544
		C-340	3/4" copper	4 1/4" alum.	40	1680	756	891	1025	1159	1311	1445	1597	1764
		C-440	1" copper	4 1/4" alum.	40	1780	801	943	1086	1228	1388	1531	1691	1869
		C-540	1 1/4" copper	4 1/4" alum.	40	1745	785	925	1064	1204	1361	1501	1658	1832
95-17	16 3/4"	S-532	1 1/4" steel	4 1/4" steel	32	1351	608	716	824	932	1054	1162	1283	1419
		S-540	1 1/4" steel	4 1/4" steel	40	1577	710	836	962	1088	1230	1356	1498	1656
		C-340	3/4" copper	4 1/4" alum.	40	1840	828	976	1123	1270	1436	1582	1748	1933
		C-440	1" copper	4 1/4" alum.	40	1950	878	1034	1190	1346	1521	1677	1853	2048
		C-540	1 1/4" copper	4 1/4" alum.	40	1911	860	1013	1166	1319	1491	1643	1815	2007
95-17 Two-tier element	16 3/4"	S-532	1 1/4" steel	4 1/4" steel	32	2153	969	1141	1313	1486	1679	1852	2045	2261
		S-540	1 1/4" steel	4 1/4" steel	40	2390	1076	1267	1458	1649	1864	2055	2271	2510
		C-340	3/4" copper	4 1/4" alum.	40	2615	1177	1386	1595	1804	2040	2249	2484	2746
		C-440	1" copper	4 1/4" alum.	40	2770	1247	1468	1690	1911	2161	2382	2632	2909
		C-540	1 1/4" copper	4 1/4" alum.	40	2715	1222	1439	1656	1873	2118	2335	2579	2851

For ratings at lower water temperatures, refer to conversion table on page 33.  
\*Based on 65°F entering air temperature.

# ACCESSORIES



Fourteen accessories let you "fit" Multi/Pak 95 in virtually any space configuration – fast and easily. Cover accessories are all telescopic. They snap in place without screws or other fasteners. All accessories, unless noted, are finished in Nu-White baked enamel. Custom color available on special order.

## non-telescopic accessories

Column cover set  
Damper (electro galvanized, not available with aluminum grille)\*  
Hanging strip\*

Tamper-proof lock\*  
Wall gasketing\*

\*See p.5 for details

## telescopic accessories



End Cap  
End Cap-slotted  
(not shown)



Splice plate



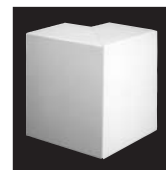
Filler sleeve



Center valve cover



Inside corner, 90°



Outside corner, 90°



End valve cover, slotted, 10"  
End valve cover, 10"  
(not shown)

Access doors: 6" x 6" 11