

Slant/Fin® MULTI/PAK® 90

SLOPE-TOP TWO-PIECE ENCLOSURE

SUBMITTAL DATA

MODELS 90-14 AND 90-21

- ORDERING DATA -

Multi/Pak 90 Complete Enclosure Assembly

PACKAGING: Complete two-piece assembly factory packaged with necessary brackets and hangers.

CONSTRUCTION: Two-piece interlocking top cover/front cover mount on wall brackets. Lock in place to provide the same shape with better rigidity than one-piece covers.

DEPTH: 5¼"

HEIGHTS: 14" (one tier), 21" (one or two tier)

LENGTHS: 3', 3½', 4', 5', 6', 7', 8'.

MATERIAL: 18-gauge steel top and front cover.

WALL BRACKETS/HANGERS: Packaged with complete assembly. SC hanger has guide rod to provide 1¹⁵/₁₆" lateral expansion movement, 1¹/₈" vertical pitch adjustment. Brackets and hangers provided with complete assembly as follows:

Length	90-14		90-21	
	Brackets	Hangers	Brackets	Hangers
3-5 ft.	2	2	2	4
6-8 ft.	3	3	3	6

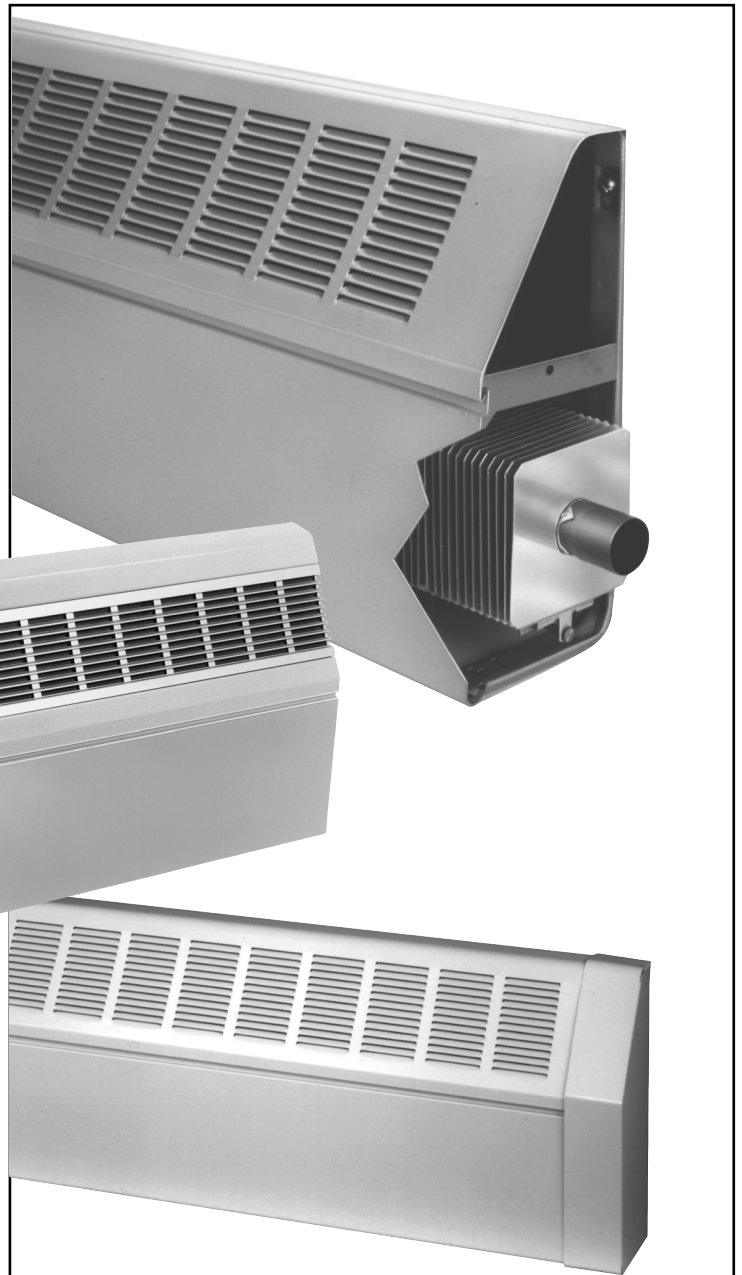
FINISH: Nu-White baked enamel is standard.

Custom color available on special order.

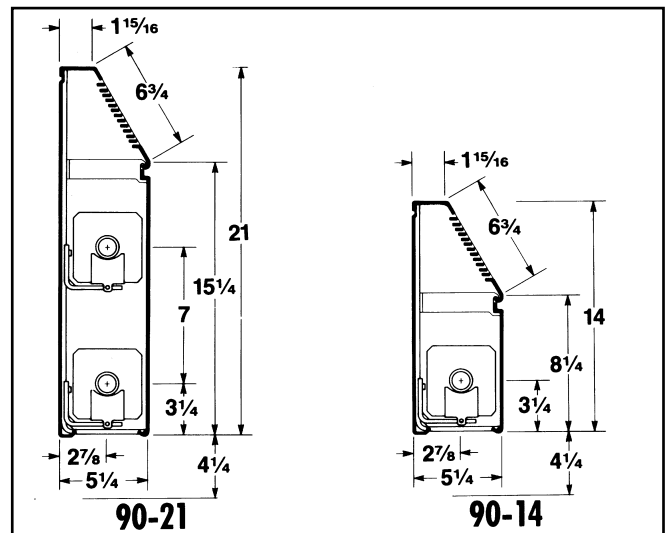
ELEMENTS: Copper with aluminum fins: C-340, C-440, C-540. Steel with electro-galvanized steel fins: S-532, S-540, S-832. Lengths from 2 to 12 feet. See p. 26.

JOINTS: Telescopic cover accessories eliminate the need to perfectly butt one length of cover to the next. Critical linear and vertical tolerances are eliminated because telescopic assembly absorbs misalignment that might result from uneven floors and walls.

See publication FT-10 for further information.



- DIMENSIONS -



Multi/Pak 90 Series two-piece fin-tube enclosure. The modern choice in commercial radiation.

- Available as a "stack item".
- Factory packaging protects the cover until ready to install.
- Easy to install. Easy to service.
- Precut lengths, telescopic accessories, speed installations.
- Nu-White baked enamel finish.



- RATINGS -

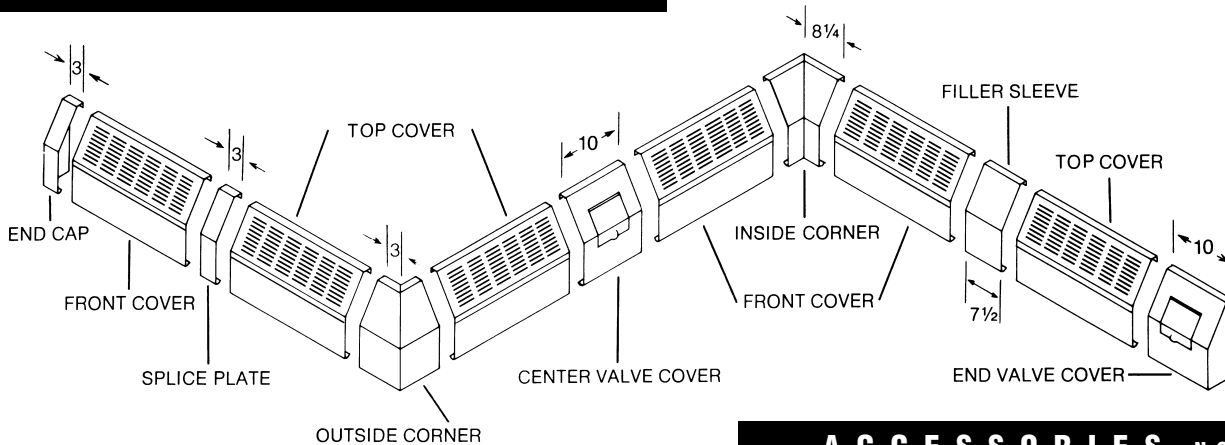
with or without dampers

Cover Type and Height	Element Type	Tube Size and Material	Fin Size and Material	Fins Per Foot	Steam 1 PSI * Btu/Hr. Per Foot	HOT WATER RATINGS* BTU/HR./FT. (Flow Rate 3 Ft./Sec.)							
						220° F 104° C	210° F 99° C	200° F 93° C	190° F 88° C	180° F 82° C	170° F 77° C	160° F 71° C	150° F 66° C
90-14 One-tier element/ 14" cover	S-532	1 1/4" steel	4 1/4" steel	32	1380	1449	1311	1187	1076	952	842	731	621
	S-540	1 1/4" steel	4 1/4" steel	40	1550	1628	1473	1333	1209	1070	946	822	698
	S-832	2" steel	4 1/4" steel	32	1400	1470	1330	1204	1092	966	854	742	630
	C-340	3/4" copper	4 1/4" alum.	40	1839	1932	1748	1582	1435	1269	1122	975	828
	C-440	1" copper	4 1/4" alum.	40	1950	2048	1853	1677	1521	1346	1190	1034	878
	C-540	1 1/4" copper	4 1/4" alum.	40	1910	2006	1815	1643	1490	1318	1165	1012	860
90-21 One-tier element/ 21" cover	S-532	1 1/4" steel	4 1/4" steel	32	1460	1533	1387	1256	1139	1007	891	774	657
	S-540	1 1/4" steel	4 1/4" steel	40	1680	1764	1596	1445	1310	1159	1025	890	756
	S-832	2" steel	4 1/4" steel	32	1520	1596	1444	1307	1186	1049	927	806	684
	C-340	3/4" copper	4 1/4" alum.	40	2013	2114	1895	1731	1570	1389	1228	1067	906
	C-440	1" copper	4 1/4" alum.	40	2130	2237	2024	1832	1661	1470	1299	1129	959
	C-540	1 1/4" copper	4 1/4" alum.	40	2090	2195	1986	1797	1630	1442	1275	1108	941
90-21 Two-tier element/ 21" cover	S-532	1 1/4" steel	4 1/4" steel	32	2190	2300	2081	1883	1708	1511	1336	1161	986
	S-540	1 1/4" steel	4 1/4" steel	40	2380	2499	2261	2047	1856	1642	1452	1261	1071
	S-832	2" steel	4 1/4" steel	32	2270	2384	2157	1952	1771	1566	1385	1203	1022
	C-340	3/4" copper	4 1/4" alum.	40	2822	2963	2681	2427	2200	1947	1721	1496	1270
	C-440	1" copper	4 1/4" alum.	40	2990	3140	2841	2571	2332	2063	1824	1585	1346
	C-540	1 1/4" copper	4 1/4" alum.	40	2930	3077	2784	2520	2285	2022	1787	1553	1319

*Based on 65° F entering air temperature.

For ratings at lower water temperatures, refer to conversion table on page 29

- ACCESSORIES -



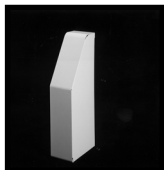
- ACCESSORIES - NON TELESCOPIC -

Fourteen accessories let you "fit" Multi/Pak 90 in virtually any space configuration-fast and easily. Cover accessories are all telescopic. They snap in place without screws or other fasteners. All accessories, unless noted, are available in Nu-white baked enamel. Custom color available on special order.

Column cover set
Damper (Nu-white)*
Damper, field installed
Hanging strip*

Back panel (Nu-white)
Tamper-proof lock*
Wall gasketing*

- TELESCOPIC ACCESSORIES -



End Cap
End Cap-slotted
(not shown)



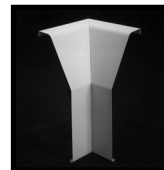
Splice plate



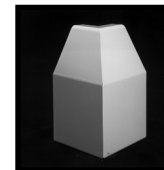
Filler sleeve



Center valve cover



Inside corner, 90°



Outside corner, 90°



End valve cover,
slotted, 10"
End valve cover, 10"
(not shown)

©Slant/Fin Corp. 1996. Printed in the U.S.A. 0101. Publication No. 90-10-SD

Slant/Fin®

SLANT/FIN CORPORATION, Greenvale, N.Y. 11548 • Phone: (516) 484-2600
FAX: (516) 484-5921 • Canada: Slant/Fin Ltd/Ltee, Mississauga, Ontario
WEB: www.slantfin.com