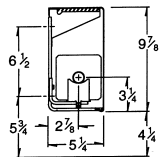


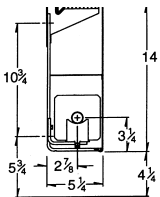
Aluminum grille optional.

Custom Heights & Configurations Available

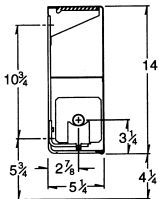
*Details for optional R-Series Damper shown on model RTD-28



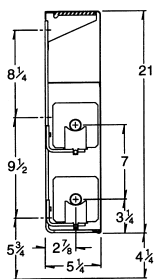
RL-10



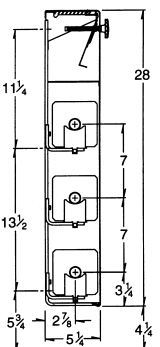
RR-14



RT-14



RT-21

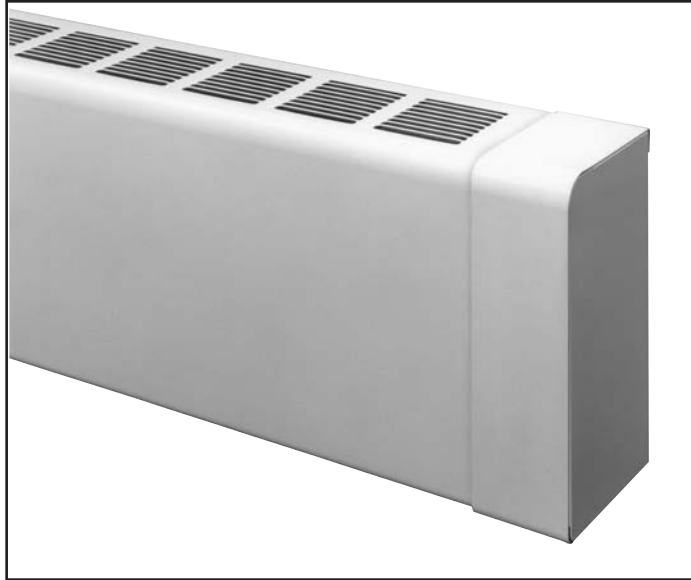


RTD-28*

R SERIES

FLAT-TOP ENCLOSURE

**MODELS RL-10, RR-10, RT-14, RR-14
RT-21, RR-21, RT-28, RR-28**



ORDERING DATA

CONSTRUCTION: Single piece cover mounts on wall brackets.

DEPTH: 5 1/4"

HEIGHTS: 9 7/8", 14" (one tier), 21" (one or two tier), 28" (up to three tier).

LENGTHS: 2', 3', 3 1/2', 4', 5', 6', 7', 8'. Other 1/2' lengths available to order.

MATERIAL: 18-gauge cover, 16 and 14-ga optional.

FINISH: Galvanized standard. Custom color baked enamel available on special order. Anodized architectural aluminum grille optional.

WALL BRACKETS/HANGERS: Order separately, specify BKT (bracket only) or BKT ASSY (bracket complete with SC hangers) followed by cover stock number and quantity.

Element	Recommended number of brackets and hangers for given length.		
	2	3	4
S-532	2-4 ft.	5-7 ft.	8 ft.
S-540	2-4 ft.	5-7 ft.	8 ft.
S-832	2-4 ft.	5-6 ft.	7-8 ft.
C-340	2-5 ft.	6-8 ft.	—
C-440	2-5 ft.	6-8 ft.	—
C-540	2-5 ft.	6-8 ft.	—

NOTE: When using end brackets on short run supply and return pipes, additional bracket(s) may be required.

ELEMENTS: Copper with aluminum fins: C-340, C-440, C-540. Steel with electro-galvanized steel fins: S-532, S-540, S-832. Lengths from 2 to 12 feet. See p. 30.

JOINTS: Slip joint connectors align cover sections which butt to one another, providing a near seamless joint. Use of telescopic accessories eliminates the need to perfectly butt one length of cover to the next. Critical linear and vertical tolerances are eliminated because telescopic assembly absorbs misalignment that might result from uneven floors and walls.

RR-10, RR-14, RR-21 and RR-28 are special order models and require a full or 4 inch back panel. Allows for 1/2" recess into wall and protects wall covering in case removing of enclosure is necessary. Galvanized finish is standard. Optional baked enamel finish available.

OPTIONS

Louver locations

R-Series enclosures may be ordered with these alternate louver locations:

Model RF: Louvered front

Model RB: Louvered top and front

OTHER OPTIONS

Damper, field installed
(not available with aluminum grille)

Back panel.

16 and 14-gauge cover.

Access door, field installed.

Inlet grille.

Architectural aluminum grille.

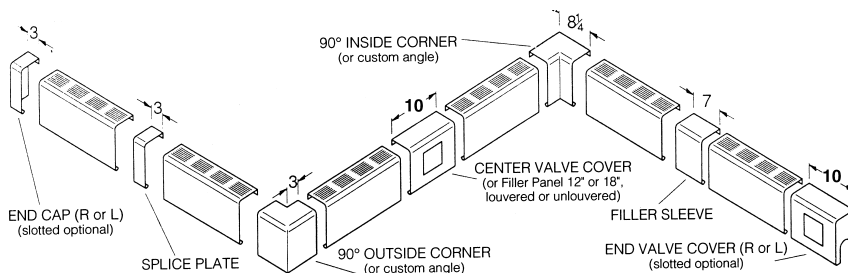
Custom color.

RATINGS

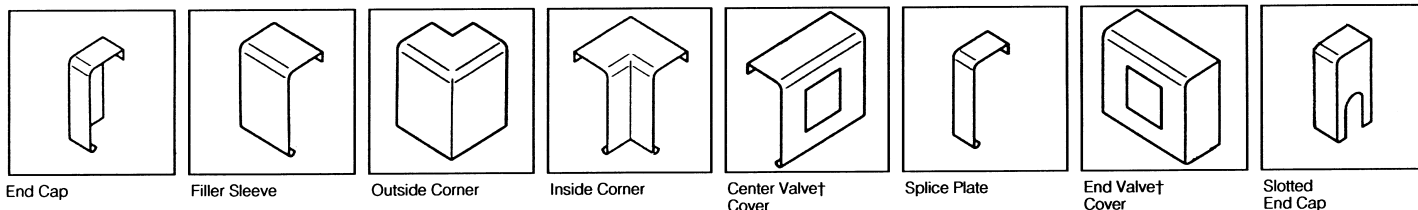
Cover Type	Enclosure Height	Element Type	Tube Size and Material	Fin Size and Material	Fins Per Foot	Steam 1 PSI * Btu/Hr. Per Foot	HOT WATER RATINGS* BTU/HR./FT. (Flow Rate 3 Ft./Sec.)							
							150°F	160°F	170°F	180°F	190°F	200°F	210°F	220°F
RL-10 RR-10	9 7/8"	S-532	1 1/4" steel	4 1/4" steel	32	1230	554	652	750	849	959	1058	1169	1292
		S-540	1 1/4" steel	4 1/4" steel	40	1330	599	705	811	918	1037	1144	1264	1397
		S-832	2" steel	4 1/4" steel	32	1270	572	673	755	876	991	1092	1207	1334
		C-340	3/4" copper	4 1/4" alum.	40	1647	742	872	1004	1136	1285	1417	1565	1730
		C-440	1" copper	4 1/4" alum.	40	1740	783	922	1061	1201	1357	1496	1653	1827
		C-540	1 1/4" copper	4 1/4" alum.	40	1710	770	906	1043	1180	1334	1471	1625	1796
RT-14 RR-14	14"	S-532	1 1/4" steel	4 1/4" steel	32	1280	576	678	781	883	998	1101	1216	1344
		S-540	1 1/4" steel	4 1/4" steel	40	1500	675	795	915	1035	1170	1290	1425	1575
		S-832	2" steel	4 1/4" steel	32	1320	594	700	805	911	1030	1135	1254	1386
		C-340	3/4" copper	4 1/4" alum.	40	1714	771	908	1046	1183	1337	1474	1628	1800
		C-440	1" copper	4 1/4" alum.	40	1820	819	965	1110	1256	1420	1565	1729	1911
		C-540	1 1/4" copper	4 1/4" alum.	40	1780	801	943	1086	1228	1388	1531	1691	1869
RT-21 RR-21	21"	S-532	1 1/4" steel	4 1/4" steel	32	1380	621	731	842	952	1076	1187	1311	1449
		S-540	1 1/4" steel	4 1/4" steel	40	1610	725	853	982	1111	1256	1385	1530	1691
		S-832	2" steel	4 1/4" steel	32	1460	657	774	891	1007	1139	1256	1387	1533
		C-340	3/4" copper	4 1/4" alum.	40	1878	846	996	1146	1296	1465	1615	1784	1972
		C-440	1" copper	4 1/4" alum.	40	1990	896	1055	1214	1373	1552	1711	1891	2090
		C-540	1 1/4" copper	4 1/4" alum.	40	1950	878	1034	1190	1346	1521	1677	1853	2048
RT-21 RR-21 Two-tier element	21"	S-532	1 1/4" steel	4 1/4" steel	32	2200	990	1166	1342	1518	1716	1892	2090	2310
		S-540	1 1/4" steel	4 1/4" steel	40	2440	1098	1293	1488	1684	1903	2098	2318	2562
		S-832	2" steel	4 1/4" steel	32	2230	1004	1182	1360	1539	1739	1918	2119	2342
		C-340	3/4" copper	4 1/4" alum.	40	2668	1201	1414	1627	1840	2081	2294	2535	2801
		C-440	1" copper	4 1/4" alum.	40	2830	1274	1500	1726	1953	2207	2434	2689	2972
		C-540	1 1/4" copper	4 1/4" alum.	40	2770	1247	1468	1690	1911	2161	2382	2632	2909
RT-28 RR-28	28"	S-532	1 1/4" steel	4 1/4" steel	32	1400	630	742	854	956	1092	1204	1330	1470
		S-540	1 1/4" steel	4 1/4" steel	40	1680	756	890	1025	1159	1310	1445	1596	1764
		S-832	2" steel	4 1/4" steel	32	1480	666	784	903	1021	1154	1273	1406	1554
		C-340	3/4" copper	4 1/4" alum.	40	1907	858	1010	1163	1315	1487	1640	1811	2002
		C-440	1" copper	4 1/4" alum.	40	2020	909	1071	1232	1394	1576	1737	1919	2121
		C-540	1 1/4" copper	4 1/4" alum.	40	1980	891	1049	1208	1366	1544	1703	1881	2079
RT-28 RR-28 Two-tier element	28"	S-532	1 1/4" steel	4 1/4" steel	32	2260	1017	1198	1379	1559	1763	1944	2147	2373
		S-540	1 1/4" steel	4 1/4" steel	40	2460	1107	1304	1501	1697	1919	2116	2337	2583
		S-832	2" steel	4 1/4" steel	32	2270	1022	1203	1385	1566	1771	1952	2157	2384
		C-340	3/4" copper	4 1/4" alum.	40	2860	1288	1516	1745	1973	2231	2460	2718	3004
		C-440	1" copper	4 1/4" alum.	40	3030	1364	1606	1848	2091	2363	2606	2879	3182
		C-540	1 1/4" copper	4 1/4" alum.	40	2970	1337	1574	1812	2049	2317	2554	2822	3119
RT-28 RR-28 Three-tier element	28"	S-532	1 1/4" steel	4 1/4" steel	32	2580	1161	1367	1574	1780	2012	2219	2451	2709
		S-540	1 1/4" steel	4 1/4" steel	40	2800	1260	1484	1708	1932	2184	2408	2660	2940
		S-832	2" steel	4 1/4" steel	32	2660	1197	1410	1623	1835	2075	2288	2527	2793
		C-340	3/4" copper	4 1/4" alum.	40	3390	1525	1797	2068	2339	2644	2915	3220	3559
		C-440	1" copper	4 1/4" alum.	40	3590	1616	1903	2190	2477	2800	3087	3411	3770
		C-540	1 1/4" copper	4 1/4" alum.	40	3520	1584	1866	2147	2429	2746	3027	3344	3696

For ratings at lower water temperatures, refer to conversion table on page 33.
*Based on 65°F entering air temperature.

ACCESSORIES



telescopic accessories



End Cap

Filler Sleeve

Outside Corner

Inside Corner

Center Valve Cover

Splice Plate

End Valve Cover

Slotted End Cap

† Access doors: 6" x 6"