

HYDRONIC FLOOR BOX

INSTALLS FLUSH WITH FLOOR, BLOCKS CHILLS AT PATIO DOORS AND FLOOR LENGTH WINDOWS



Convection heating comfort for glass wall areas.

The Hydronic Floor Box provides uninterrupted heating comfort at glass wall areas such as patio doors, floor length windows, and other areas where there is insufficient wall space for baseboard. It recesses neatly into the floor and may be connected directly to a baseboard loop.

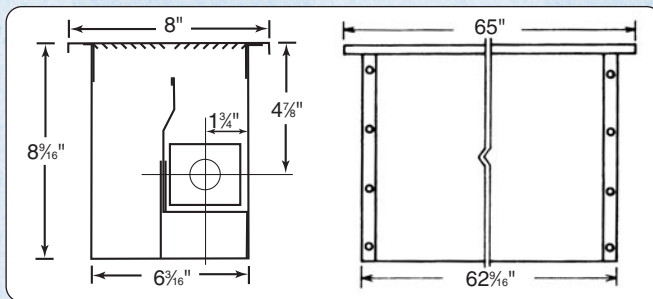
The floor box is thermodynamically designed to maximize convection heating effectiveness. A built-in baffle channels the cold incoming air to the bottom of the box, where it is then drawn up over the finned heating element and discharged into the room. The warm blanket of exiting air blocks chills and drafts from penetrating the room.

A hefty steel grille withstands heavy traffic. It overlaps the floor opening and is easily removed for cleaning the floor box. Using a 5 foot H-3 heating element, the unit provides 3230 Btuh.*

*Btu/hr, 180°F water temperature, 4 gpm flow



Dimensions



Ratings

WATER FLOW	140°	150°	160°	170°	180°	190°	200°	210°	220°
1 GPM	1570	1940	2310	2710	3040	3420	3800	4180	4510
4 GPM	1670	2050	2440	2850	3230	3610	4040	4420	4750

Hot water ratings, Btu/hr with with 65° entering air.

Ordering Information

HYDRONIC FLOOR BOX PACKAGE:

Includes floor box and grille plus 5 ft. H-3 heating element with expansion cradles and two riser rings. Floor box, grille and heating element may be purchased separately. Nu-White baked enamel finish for grille optional.

DIMENSIONS:

Enclosure 62-9/16" x 6-3/16 x 8-9/16" (ht.).
Grille: 65" x 8"

MATERIALS:

18-gauge cold rolled steel enclosure.
16-gauge cold rolled steel grille.

FINISH:

Rust resistant bonded zinc finish.

ELEMENT:

H-3, 3/4" copper with aluminum fins.



©Slant/Fin Corp. 2016 • Printed in the U.S.A. 816 • Publication No. HFB-10

SLANT/FIN CORPORATION, Greenvale, NY 11548 • Phone: (516) 484-2600
FAX: (516) 484-0933 • Canada: Slant/Fin LTD/LTEE, Mississauga, Ontario

www.slantfin.com