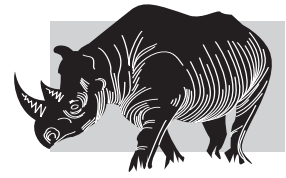


Slant/Fin[®]

RHINO-CAST



CAST-IRON BASEBOARD

INSTALLATION INSTRUCTIONS

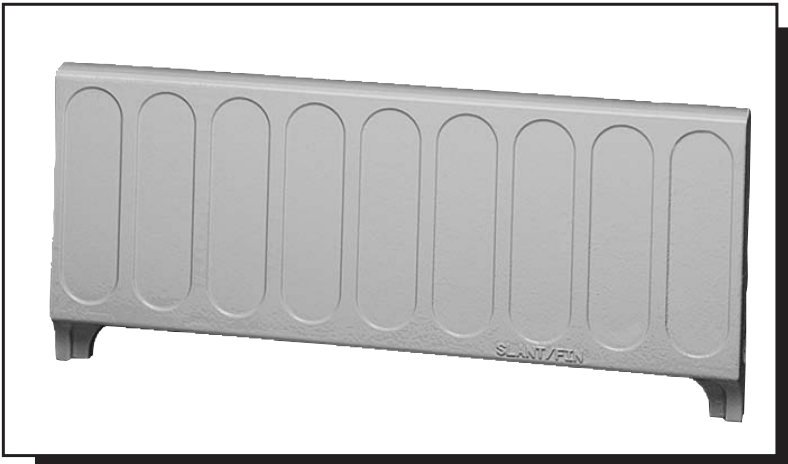


TABLE OF CONTENTS

Roughing in dimensions 2

Assembly of sections or sub-assemblies 2

Installation of baseboard 3/4

Recessing baseboard 4

Assemblies 4-5

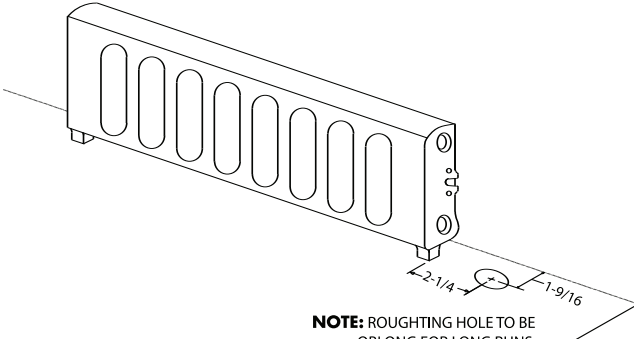
Accessories 5-6

Ratings 7-8



ROUGHING IN DIMENSIONS:

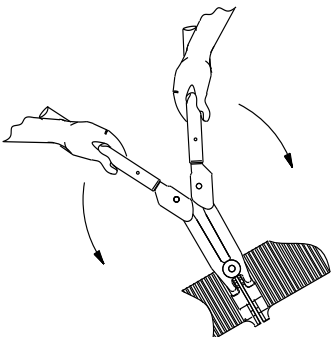
Rough in piping stubs $1\frac{1}{16}$ " from the wall on which baseboard is to be mounted, and $2\frac{1}{4}$ " from the ends of the baseboard. Rough openings for the stubs should be large enough to allow for expansion. On long runs an oblong opening is recommended.



Allow a 5" space for a valve enclosure, from the end of baseboard. The baseboard is attached to the wall, using wall bracket and hanging strip if required.

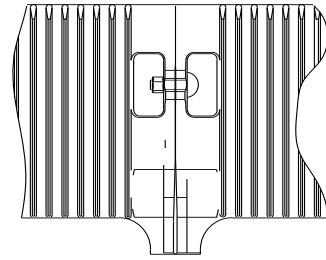
ASSEMBLY OF SECTIONS OR SUB-ASSEMBLIES:

1. Lay out sections or sub-assemblies face down on the floor.
2. Remove protective plugs from nipple ports and pipe connection tapping ports.
3. Clean all edges of push nipple ports and tapping ports with clean cloth to remove dirt and debris.
4. Clean push nipples with clean cloth to remove dirt and debris, and apply a thin coating of graphite paste or pipe joint compound, to machined surface of the push nipple port.
5. Carefully insert push nipple into one section, make sure they are square by firmly tapping them with a nonmetallic mallet (tap lightly at first, then firmly).
6. Attach the next section by inserting the exposed portion of the push nipples into the next section.
7. Place the jaws of the assembly tool into the recesses of the two sections and push arms of tool apart, with a downward motion, pulling both sections together.

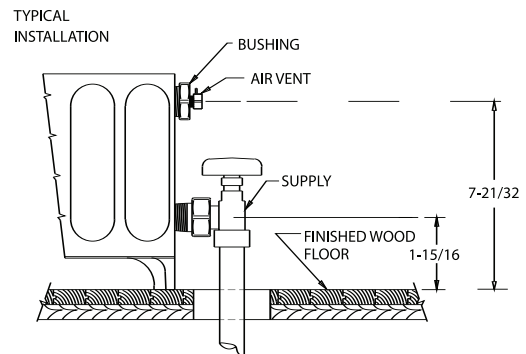


8. If nipples do not draw castings up evenly, strike the end of a section sharply, using a wooden block and a hammer.

DO NOT STRIKE CASTING WITH METAL HAMMER.



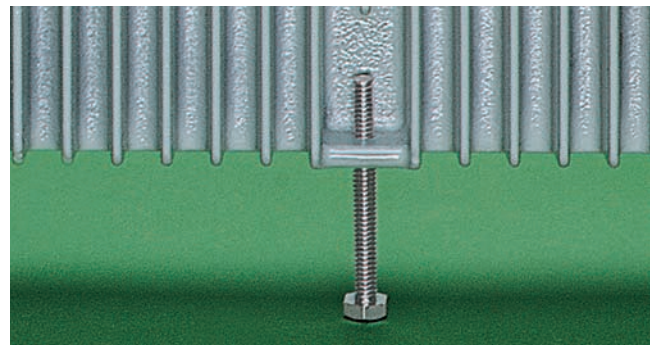
After sections or assemblies are drawn up tight, remove assembly tool and secure sections with $3/8$ -16 x $1\frac{1}{4}$ " long carriage bolt, and $3/8$ -16 hex nut. Tighten with an open end or box wrench. Be sure the assembly is straight and not bowed. Install radiator union, elbows, valves, air vents and plugs as required.



Install center support leveling bolt, $1/4$ "-20 x 2" long, into tapped hole provided on the bottom of the intermediate section.

See table for quantities of supports required for each section.

SECTION SIZE	QTY.
3' to $13\frac{1}{2}$ '	1
14' to $19\frac{1}{2}$ '	2
20' to 24'	3



SECURE BASEBOARD TO WALL

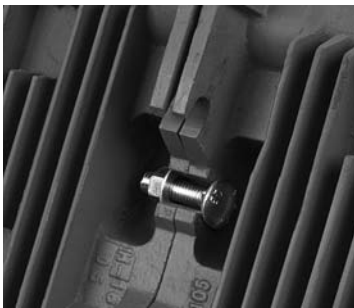
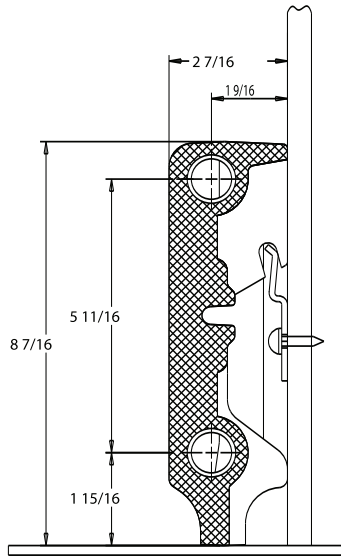
Attach mounting strip to the wall as follows:

Floor standing assembly, 6 ft. or less – Secure one 35" mounting strip (#210551) on the wall in middle of assembly.

Floor standing assembly, longer than 6 ft. – Secure 35" mounting strip (#210551) on the wall evenly spaced along the length of the assembly. Use one mounting strip for every 6 feet of assembly.

Position baseboard against the wall. The leveling bolt and legs should rest on the floor or wooden strips.

Adjust leveling bolts so that the weight of the baseboard is distributed evenly.



Assemble baseboard sections flat on floor. Secure with connecting bolts.

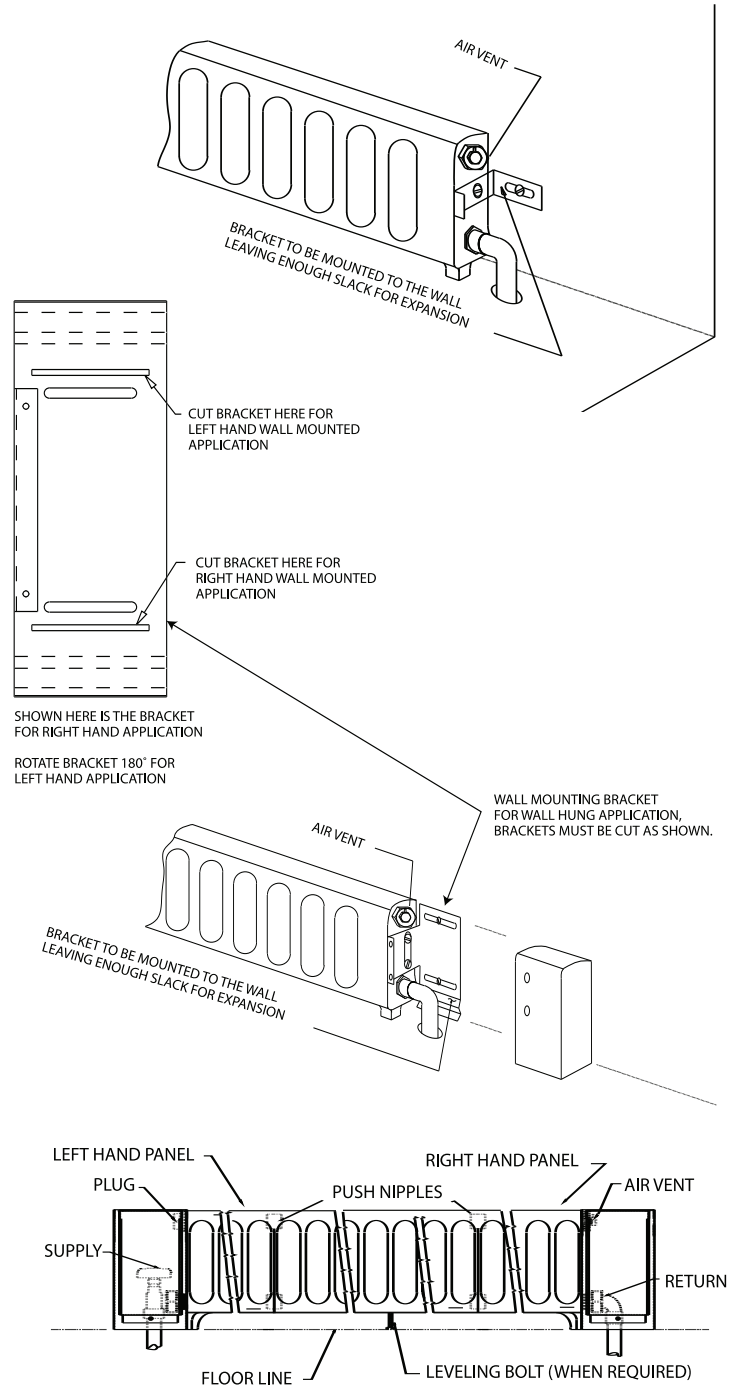


Mount hanging strips on wall and lift assembled baseboard sections into place on hanging strips.

After adjustments are made to the baseboard, snug up wall mounting brackets (*DO NOT over tighten*) allowing for expansion.

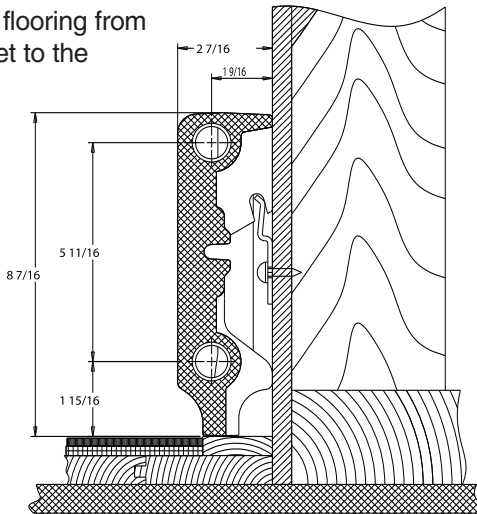
Attach baseboard to the wall with mounting angles or wall bracket. If stud is not available, use molly or other device to provide secure attachment. Snug up screws (*DO NOT over tighten*) allowing for expansion.

In applications where a bracket is being used, the bracket is screwed to the wall and attached to the baseboard. If stud is not available, use molly or other device to provide secure attachment. Snug up screws (*DO NOT over tighten*) allowing for expansion.



INSTALLATION OF BASEBOARD ON UNFINISHED FLOOR OR WITH WALL TO WALL CARPETING.

When baseboard is installed before the finished floor, a strip of wood, 2 3/8" wide and a thickness that matches the height of the finished floor, must be installed to raise the entire length of the baseboard, including accessories. This will prevent the flooring from blocking the inlet to the baseboard.



If baseboard is installed in an area that will have wall to wall carpeting, a wooden strip 2 3/8" wide by the approximate thickness in height of the carpet and pad, should be installed at the base of the wall for the length of the baseboard plus accessories. This will prevent carpeting from blocking the inlet to the baseboard.

Wooden blocks, of the approximate thickness in height of the carpet and pad, could be substituted under each leg and center leveling bolt in the application above. *IF WALL TO WALL CARPETING IS INSTALLED PRIOR TO THE INSTALLATION*, cut out small sections of carpet and pad, and install wooden blocks as described in previous sentence.

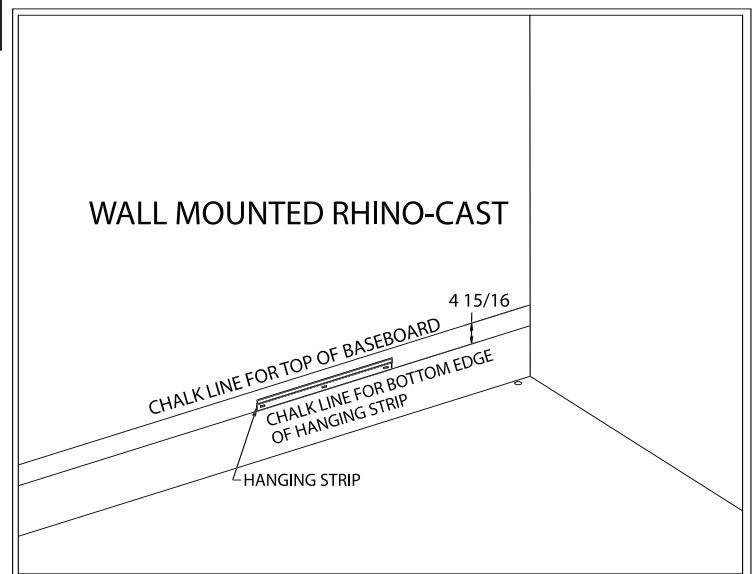
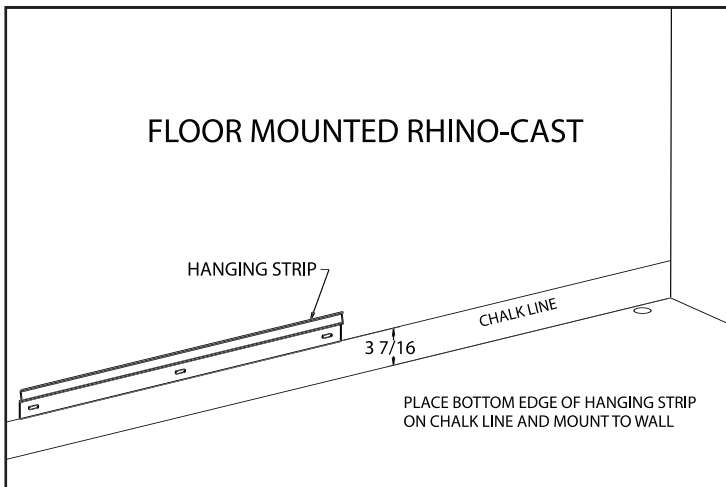
Wall preparation:

It is recommended that space between the studs be insulated at least 12" above the floor with full thick insulation. Mark stud locations on floor to assist proper mounting of hanging strip.

Slant/Fin cast-iron assemblies

Slant/Fin cast-iron baseboard and sub-assemblies, up to and including 6 ft. lengths, are shipped assembled. Assemblies longer than 6 ft., are shipped as individual assemblies, a maximum of 6 ft. long. See assembly chart on page 5.

Connect cast-iron baseboard assemblies to heating system piping. Fill system and check for leaks. Start up the boiler and bring up the water to normal operating temperature, and again check for leaks.



RHINO-CAST CAST-IRON BASEBOARD ASSEMBLIES

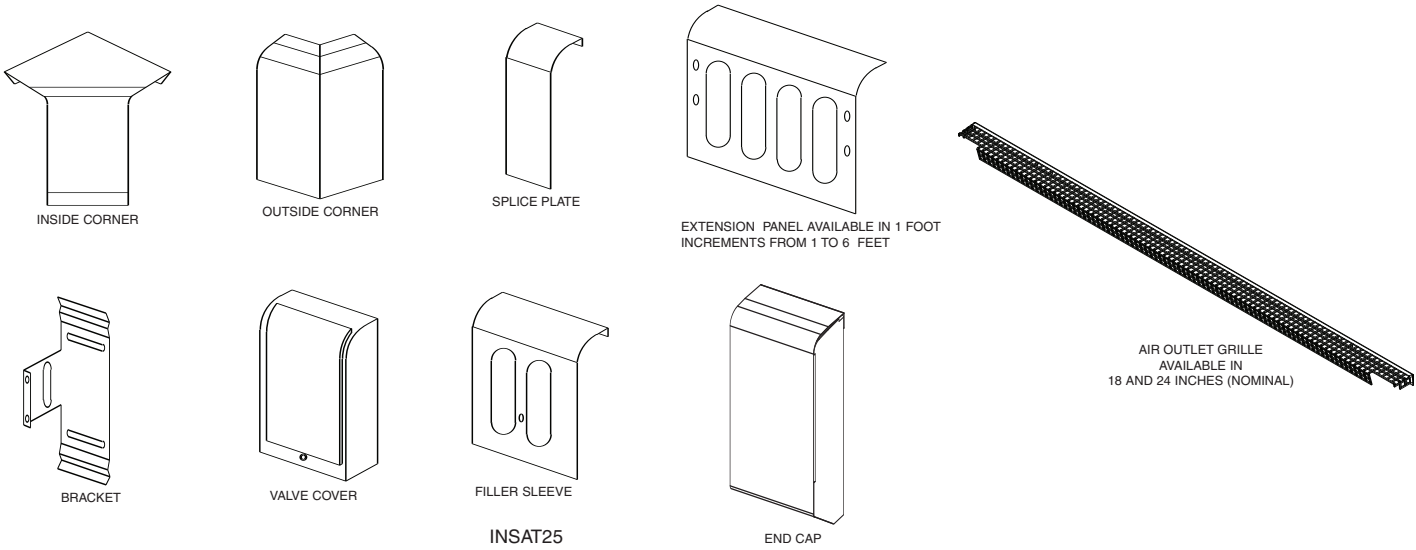
COMPLETE ASSEMBLIES			
Length, Ft.	SUB-ASSEMBLY LENGTHS, Ft.		
	Left	Center	Right
3	1½	—	1½
3½	2	—	1½
4	2	—	2
4½	1½	1½	1½
5	1½	2	1½
5½	2	2	1½
6	2	2	2

SUB-ASSEMBLIES			
3 ft. center	—	1½ + 1½	—
4 ft. center	—	2 + 2	—
5 ft. center	—	2 + 1½ + 1½	—
6 ft. center	—	2 + 2 + 2	—
3 ft. right sub-assy.	—	1½	1½
4 ft. right sub-assy.	—	2	2
5 ft. right sub-assy.	—	1½ + 1½	2
5½ ft. right sub-assy.	—	2 + 1½	2
6 ft. right sub-assy.	—	2 + 2	2
3 ft. left sub-assy.	1½	1½	—
4 ft. left sub-assy.	2	2	—
5 ft. left sub-assy.	2	1½ + 1½	—
5½ ft. left sub-assy.	2	2 + 1½	—
6 ft. left sub-assy.	2	2 + 2	—

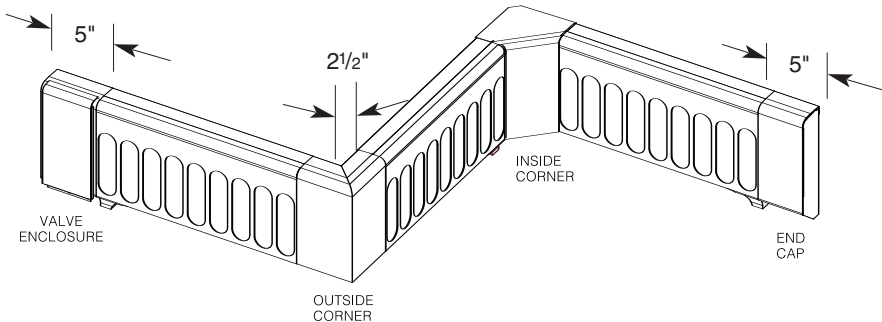
FIELD ASSEMBLIES			
Length Ft.	Sub-assembly lengths		
	Left	Center	Right
6½	5'	—	1½'
7	5'	—	2'
7½	5½'	—	2'
8	6'	—	2'
8½	5½'	—	3'
9	6'	—	3'
9½	5½'	—	4'
10	5'	—	5'
10½	5½'	—	5'
11	6'	—	5'
11½	6'	—	5½'
12	6'	—	6'
12½	5½'	2'	5'
13	6'	2'	5'
13½	5½'	2'	6'
14	6'	2'	6'
14½	5½'	3'	6'
15	6'	3'	6'

FIELD ASSEMBLIES			
Length Ft.	Sub-assembly lengths		
	Left	Center	Right
15½	5½'	4'	6'
16	6'	4'	6'
16½	5½'	5'	6'
17	6'	5'	6'
17½	5½'	6'	6'
18	6'	6'	6'
18½	5'	6'+6'	1½'
19	5'	6'+6'	2'
19½	5½'	6'+6'	2'
20	5'	5'+5'	5'
20½	5½'	6'+6'	3'
21	6'	6'+6'	3'
21½	5½'	6'+6'	4'
22	6'	6'+6'	4'
22½	5½'	6'+6'	5'
23	6'	6'+6'	5'
23½	5½'	6'+6'	6'
24	6'	6'+6'	6'

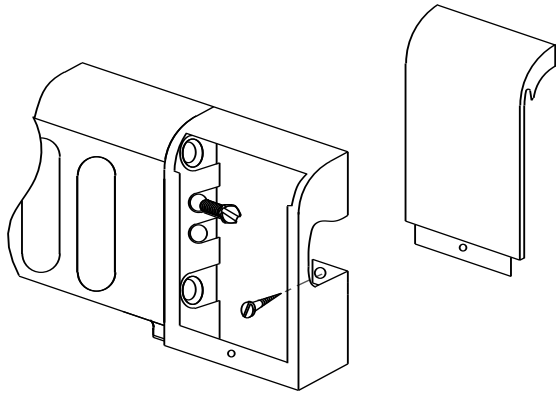
ACCESSORIES



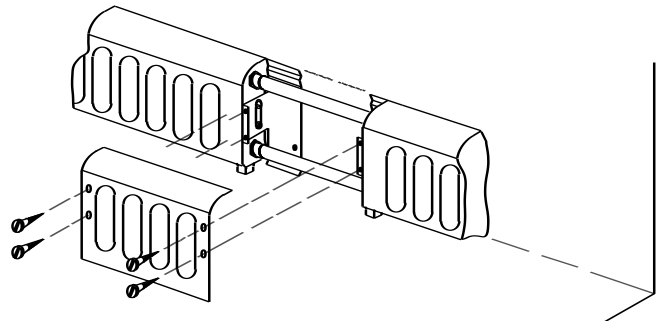
ACCESSORY DIMENSIONS



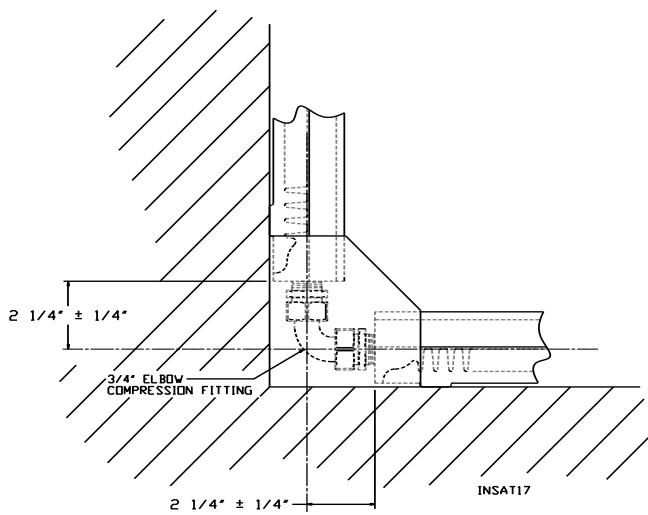
VALVE COVERS



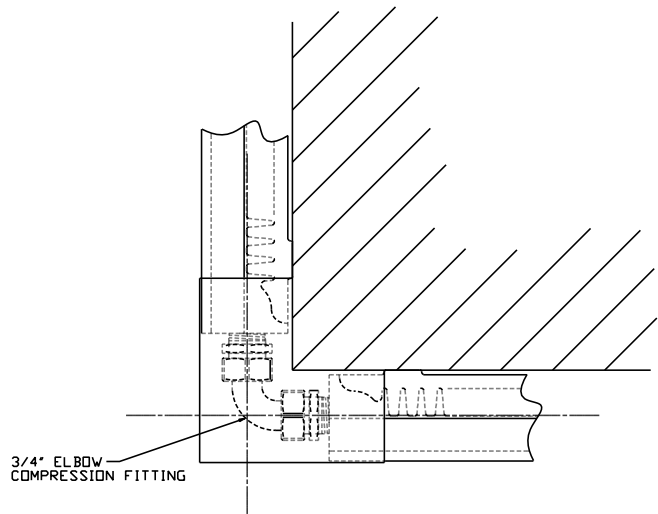
EXTENSION PANELS



INSIDE AND OUTSIDE CORNERS



Inside Corner connection with standard compression fittings.



Outside "Projecting" Corner connection with standard compression fittings.

Slant/Fin

RHINO-CAST CAST-IRON BASEBOARD

WATER RATINGS (4 GPM)

Length in Lineal Ft.	Hot Water Ratings in Btu/hr. at 2000 lbs./hr. (4 GPM) Flow Rate at Average Water Temperature of									Pressure Drop in Inches of Water
	150° F	160° F	170° F	180° F	190° F	200° F	210° F	215° F	220° F	
Per Lin. Ft.	380	440	510	570	640	710	770	800	840	1.107
1.5	570	660	765	855	960	1065	1155	1200	1260	1.195
2.0	760	880	1020	1140	1280	1420	1540	1600	1680	1.282
2.5	950	1100	1275	1425	1600	1775	1925	2000	2100	1.370
3.0	1140	1320	1530	1710	1920	2130	2310	2400	2520	1.457
3.5	1330	1540	1785	1995	2240	2485	2695	2800	2940	1.545
4.0	1520	1760	2040	2280	2560	2840	3080	3200	3360	1.632
4.5	1710	1980	2295	2565	2880	3195	3465	3600	3780	1.720
5.0	1900	2200	2550	2850	3200	3550	3850	4000	4200	1.807
5.5	2090	2420	2805	3135	3520	3905	4235	4400	4620	1.895
6.0	2280	2640	3060	3420	3840	4260	4620	4800	5040	1.982
6.5	2470	2860	3315	3705	4160	4615	5005	5200	5460	2.070
7.0	2660	3080	3570	3990	4480	4970	5390	5600	5880	2.157
7.5	2850	3300	3825	4275	4800	5325	5775	6000	6300	2.245
8.0	3040	3520	4080	4560	5120	5680	6160	6400	6720	2.332
8.5	3230	3740	4335	4845	5440	6035	6545	6800	7140	2.420
9.0	3420	3960	4590	5130	5760	6390	6930	7200	7560	2.507
9.5	3610	4180	4845	5415	6080	6745	7315	7600	7980	2.595
10.0	3800	4400	5100	5700	6400	7100	7700	8000	8400	2.682
10.5	3990	4620	5355	5985	6720	7455	8085	8400	8820	2.770
11.0	4180	4840	5610	6270	7040	7810	8470	8800	9240	2.857
11.5	4370	5060	5865	6555	7360	8165	8855	9200	9660	2.945
12.0	4560	5280	6120	6840	7680	8520	9240	9600	10080	3.032
12.5	4750	5500	6375	7125	8000	8875	9625	10000	10500	3.120
13.0	4940	5720	6630	7410	8320	9230	10010	10400	10920	3.207
13.5	5130	5940	6885	7695	8640	9585	10395	10800	11340	3.295
14.0	5320	6160	7140	7980	8960	9940	10780	11200	11760	3.382
14.5	5510	6380	7395	8265	9280	10295	11165	11600	12180	3.470
15.0	5700	6600	7650	8550	9600	10650	11550	12000	12600	3.557
15.5	5890	6820	7905	8835	9920	11005	11935	12400	13020	3.645
16.0	6080	7040	8160	9120	10240	11360	12320	12800	13440	3.732
16.5	6270	7260	8415	9405	10560	11715	12705	13200	13860	3.820
17.0	6460	7480	8670	9690	10880	12070	13090	13600	14280	3.907
17.5	6650	7700	8925	9975	11200	12425	13475	14000	14700	3.995
18.0	6840	7920	9180	10260	11520	12780	13860	14400	15120	4.082
18.5	7030	8140	9435	10545	11840	13135	14245	14800	15540	4.170
19.0	7220	8360	9690	10830	12160	13490	14630	15200	15960	4.257
19.5	7410	8580	9945	11115	12480	13845	15015	15600	16380	4.345
20.0	7600	8800	10200	11400	12800	14200	15400	16000	16800	4.432
20.5	7790	9020	10455	11685	13120	14555	15785	16400	17220	4.520
21.0	7980	9240	10710	11970	13440	14910	16170	16800	17640	4.607
21.5	8170	9460	10965	12255	13760	15265	16555	17200	18060	4.695
22.0	8360	9680	11220	12540	14080	15620	16940	17600	18480	4.782
22.5	8550	9900	11475	12825	14400	15975	17325	18000	18900	4.870
23.0	8740	10120	11730	13110	14720	16330	17710	18400	19320	4.957
23.5	8930	10340	11985	13395	15040	16685	18095	18800	19740	5.045
24.0	9120	10560	12240	13680	15360	17040	18480	19200	20160	5.132

Flow Rate Lbs./Hr.	GPM	Pressure Drop (Millinches H ₂ O)		
		Per Ft. of 3/4" Pipe	Entrance Exit	Additional/Ft.
500	1	40	35.9	21.4
2000	4	535	932	311.8



Slant/Fin**RHINO-CAST****CAST-IRON BASEBOARD****WATER RATINGS (1 GPM)**

Length in Lineal Ft.	Hot Water Ratings in Btu/hr. at 500 lbs./hr. (1 GPM) Flow Rate at Average Water Temperature of									Pressure Drop in Inches of Water
	150° F	160° F	170° F	180° F	190° F	200° F	210° F	215° F	220° F	
Per Lin. Ft.	340	420	480	540	610	670	730	760	790	0.042
1.5	510	630	720	810	915	1005	1095	1140	1185	0.045
2.0	680	840	960	1080	1220	1340	1460	1520	1580	0.048
2.5	850	1050	1200	1350	1525	1675	1825	1900	1975	0.051
3.0	1020	1260	1440	1620	1830	2010	2190	2280	2370	0.054
3.5	1190	1470	1680	1890	2135	2345	2555	2660	2765	0.057
4.0	1360	1680	1920	2160	2440	2680	2920	3040	3160	0.060
4.5	1530	1890	2160	2430	2745	3015	3285	3420	3555	0.063
5.0	1700	2100	2400	2700	3050	3350	3650	3800	3950	0.066
5.5	1870	2310	2640	2970	3355	3685	4015	4180	4345	0.069
6.0	2040	2520	2880	3240	3660	4020	4380	4560	4740	0.072
6.5	2210	2730	3120	3510	3965	4355	4745	4940	5135	0.075
7.0	2380	2940	3360	3780	4270	4690	5110	5320	5530	0.078
7.5	2550	3150	3600	4050	4575	5025	5475	5700	5925	0.081
8.0	2720	3360	3840	4320	4880	5360	5840	6080	6320	0.084
8.5	2890	3570	4080	4590	5185	5695	6205	6460	6715	0.087
9.0	3060	3780	4320	4860	5490	6030	6570	6840	7110	0.090
9.5	3230	3990	4560	5130	5795	6365	6935	7220	7505	0.093
10.0	3400	4200	4800	5400	6100	6700	7300	7600	7900	0.096
10.5	3570	4410	5040	5670	6405	7035	7665	7980	8295	0.099
11.0	3740	4620	5280	5940	6710	7370	8030	8360	8690	0.102
11.5	3910	4830	5520	6210	7015	7705	8395	8740	9085	0.105
12.0	4080	5040	5760	6480	7320	8040	8760	9120	9480	0.108
12.5	4250	5250	6000	6750	7625	8375	9125	9500	9875	0.111
13.0	4420	5460	6240	7020	7930	8710	9490	9880	10270	0.114
13.5	4590	5670	6480	7290	8235	9045	9855	10260	10665	0.117
14.0	4760	5880	6720	7560	8540	9380	10220	10640	11060	0.120
14.5	4930	6090	6960	7830	8845	9715	10585	11020	11455	0.123
15.0	5100	6300	7200	8100	9150	10050	10950	11400	11850	0.126
15.5	5270	6510	7440	8370	9455	10385	11315	11780	12245	0.129
16.0	5440	6720	7680	8640	9760	10720	11680	12160	12640	0.132
16.5	5610	6930	7920	8910	10065	11055	12045	12540	13035	0.135
17.0	5780	7140	8160	9180	10370	11390	12410	12920	13430	0.138
17.5	5950	7350	8400	9450	10675	11725	12775	13300	13825	0.141
18.0	6120	7560	8640	9720	10980	12060	13140	13680	14220	0.144
18.5	6290	7770	8880	9990	11285	12395	13505	14060	14615	0.147
19.0	6460	7980	9120	10260	11590	12730	13870	14440	15010	0.150
19.5	6630	8190	9360	10530	11895	13065	14235	14820	15405	0.153
20.0	6800	8400	9600	10800	12200	13400	14600	15200	15800	0.156
20.5	6970	8610	9840	11070	12505	13735	14965	15580	16195	0.159
21.0	7140	8820	10080	11340	12810	14070	15330	15960	16590	0.162
21.5	7310	9030	10320	11610	13115	14405	15695	16340	16985	0.165
22.0	7480	9240	10560	11880	13420	14740	16060	16720	17380	0.168
22.5	7650	9450	10800	12150	13725	15075	16425	17100	17775	0.171
23.0	7820	9660	11040	12420	14030	15410	16790	17480	18170	0.174
23.5	7990	9870	11280	12690	14335	15745	17155	17860	18565	0.177
24.0	8160	10080	11520	12960	14640	16080	17520	18240	18960	0.180



©Slant/Fin Corp. 2003. Printed in U.S.A. 106.

Slant/Fin

SLANT/FIN CORPORATION, Greenvale, N.Y. 11548 • Phone: (516) 484-2600

FAX: (516) 484-5921 • Canada: Slant/Fin LTD/LTEE, Mississauga, Ontario

www.slantfin.com