

Slant/Fin

XL-2000

CAST-IRON, OIL FIRED BOILER



- Up to 85% AFUE
- Superb combustion for reliable, efficient home heating.
- Swing-out burner door. Insulation on door & target wall.
- Easy to clean and service.
- Economy priced. Economical to operate.
- From 1.00 to 1.15 GPH No. 2 oil input.
- Lightweight



Easier to handle. Door and mounted burner can easily be lifted off.

The lean, clean, heating machine.

LEAN!

No "extra baggage"

The XL-2000 was designed specifically as a hot water boiler, without the "extra baggage" of steam and tankless coil requirements.

Fits through tight spaces. Lighter weight

During delivery you can lift the door and mounted burner right off. The XL-2000 then fits easily through very tight spaces.

Extra depth combustion area

For better performance the door is dome-shaped to add space to the combustion area.

CLEAN!

High performance cast-iron heat exchanger

The XL-2000 wet base heat exchanger surrounds the flame. Wide, low-profile heat exchanger sections transfer heat evenly with exceptionally low draft loss. It provides good performance under a wider range of operating conditions.

Easy to maintain for like-new performance

The XL-2000 boiler is "service-friendly". Virtually 100% of heat exchanger surfaces are flue brush accessible. For unobstructed inspection and cleaning, the burner door can swing out and easily lift off, if desired.

Metal push nipples

Our cast-iron boilers are made with multiple sections that are joined together with metal push nipples that expand and contract with the individual boiler sections that they connect.

Computer-designed for economy and durability

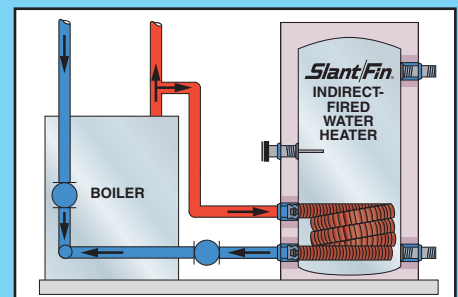
The high-efficiency XL-2000 oil-fired boiler is computer-designed to reduce your fuel bills and provide years of dependable service.

Better heat exchanger produces higher efficiency

The advanced design of the XL-2000 heat exchanger maximizes the transfer of heat from the burner flame to the water in your heating system. The wet-base, wet-back boiler sections are filled with water, even on the sides, bottom and back of the combustion area. The flue passage design and thermal pin pattern of the heat exchanger ensure very low draft loss and uniform heat transfer, reducing thermal strain and prolonging the life of the casting. The unobstructed flue path promotes better performance and minimizes soot buildup.

XL-2000 can provide hot water for your kitchen, bath and laundry.

For a large reserve of hot water for your family all year long, your installer can provide an indirect-fired storage water heater that is easily connected to the XL-2000 boiler.

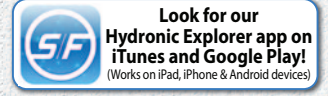


www.slantfin.com



XL-2000

Compact, high efficiency, oil-fired boiler.



Ratings and Dimensions

All dimensions subject to normal manufacturing tolerance.

BOILER MODEL NO.	AHRI BURNER CAPACITY OIL INPUT †‡		DOE HEATING CAPACITY (MBH)* WATER	AHRI WATER NET RATING (MBH)*	AHRI CHIMNEY SIZE		AFUE % WATER	BOILER LENGTH "A"	FRONT TO FLUE "B"	FLUE COLLAR DIA. "C"	CIRCULATOR SUPPLY FLANGE "D" NPT	APPROX. OVERALL LENGTH "E"	SHIPPING WEIGHT (lbs.)
	GPH	BTUH			NOM. RECT X HEIGHT ‡ (in x in x ft)	I.D. ROUND X HEIGHT (in x ft)							
XL-30-1.00	1.00	140,000	121	105	8 x 8 x 15	6 x 15	85.0	12 ³ / ₁₆ "	6 ⁵ / ₁₆ "	6"	1 ¹ / ₄ "	28 ⁷ / ₈ "	382
XL-30-1.15	1.15	161,000	138	120	8 x 8 x 15	6 x 15	84.1	12 ³ / ₁₆ "	6 ⁵ / ₁₆ "	6"	1 ¹ / ₄ "	28 ⁷ / ₈ "	382

Standard working pressure 30 psi.

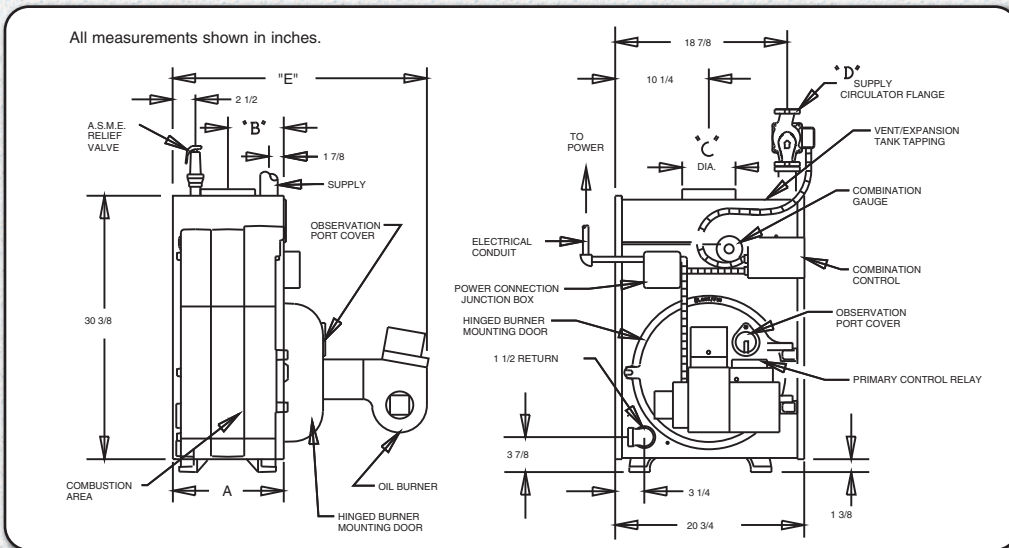
All boilers hydrostatically tested — A.S.M.E.

* For forced hot water heating systems where the boiler and all piping are located within the area to be heated, the boiler may be selected on the basis of gross D.O.E. capacity output. The net AHRI output ratings shown are based on an allowance for piping and pickup of 1.15. D.O.E. heating capacity is divided by the allowance to obtain net rating. The Slant/Fin Technical Service Department should be consulted before selecting a boiler for unusual piping and pick-up requirements such as intermittent system operation, extensive piping, etc.

† Ratings apply to the use of light oil at 140,000 Btu per gallon and apply only with Slant/Fin supplied burners properly adjusted to produce 13% CO₂.

‡ Nominal clay tile liner dimensions.

¶ Oval flue collar. Fits 6" dia. vent connectors.

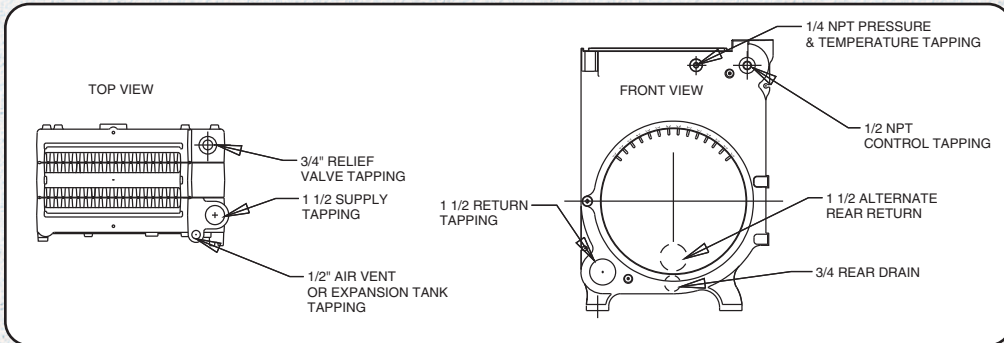


Standard Equipment

- Pre-assembled cast-iron heat exchanger
- Jacket with insulation
- Combustion chamber (burner mounting plate insulation and target wall)
- Pressure and temperature gauge
- Pressure relief valve (ASME) (in carton)*
- Flame retention oil burner with nozzle, primary relay and cadmium sulfide flame detector. Specify Beckett, Carlin, Riello.
- Circulator: Taco with 1¹/₄" flange, B&G, Grundfos.
- Draft regulator (in carton)
- Drain cock (in carton)
- Flue brush (in carton)
- Combination hi-limit control and circulator relay
- Circulator inlet flange/nipple assembly (in carton)
- Swing-out / removable burner mounting door
- Swing-up inspection door

* Boilers are factory equipped with 30 psi ASME relief valves. Boilers are rated for 100 psi and may be ordered with 50 psi or 100 psi relief valves. Consult factory for price.

Tappings and Openings



Before purchasing this appliance, read important energy cost and efficiency information available from your contractor.



©Slant/Fin Corp. 2015 • Printed in U.S.A. 1115 • Publication XL-10A

SLANT/FIN CORP. Greenvale, N.Y. 11548 • Phone: (516) 484-2600 FAX: (516) 484-0933
 Canada: Slant/Fin LTD/LTEE, 400 Ambassador Drive, Mississauga, Ontario, L5T 2 J3
www.slantfin.com